

Bulletin: CLIB-0012

Date: April 20, 2011

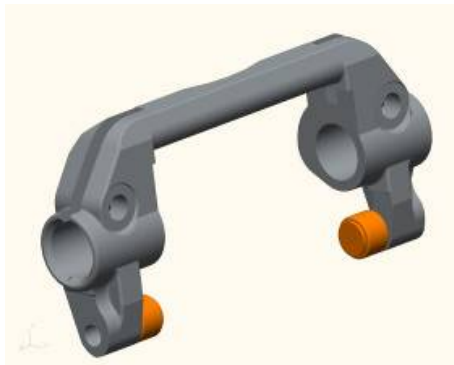
Bulletin Type: Service

Topic: Elimination of 15.5" Solo XL and Easy-Pedal XL Clutch Product

Issue Description:

With the release of the 15.5" Solo and Easy-Pedal Advantage clutch product family the 15.5" Solo XL and Easy-Pedal XL is being eliminated from the Eaton clutch product offering. . The enhancements that have been made to the Solo and Advantage release bearing and the release sleeve bushing provide the robustness that does not require the need for a roller yoke.

The 15.5" Solo XL and Easy-Pedal XL product required the use of the 97-509-10-3X XL Roller Yoke.



The 15.5" Solo and Easy-Pedal Advantage clutch uses standard release yoke part number 85533 (105C137).



Action:

When replacing the 15.5" Solo XL or Easy-Pedal XL product with the 15.5" Solo or Easy-Pedal Advantage product, or remanufactured clutch offerings, it will be necessary to replace the 97-509-10-3X roller yoke with the 85533 (105C137) standard release yoke.

Affected Part Numbers:

Solo XL part numbers:

109705-14Y	109705-20Y	109705-24Y	109705-25Y	109705-30Y	109705-34Y
109705-35Y	109705-80Y	109705-82y	109705-85Y	109707-91Y	109707-92Y
109706-32Y	109706-42Y				

Easy-Pedal XL part numbers:

108926-14Y	108926-20Y	108926-24Y	108926-25Y	108926-30Y	108926-34Y
108926-35Y	108926-72Y	108926-80Y	108926-82Y	108926-85Y	108009-32Y
108009-42Y					

Field Strategy:

None required

Warranty Information:**Warranty Parts:**

N/A

Warranty Labor:

N/A

Claim Coding:

ATA Code:

Failed P/N:

Complaint Code:

Failure Code:

Responsibility Code:

COA:

Part Return Instructions:

Notification Instructions:

Warranty Coverage:

If a warrantable failure occurs and the standard fork needs to be updated as an Advantage clutch is now being used, Eaton warranty will also pay for the standard for replacement.