

Bulletin: CLIB-0008

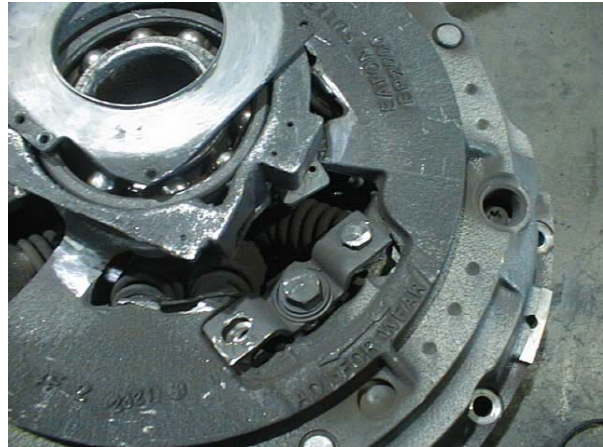
Date: November 29, 2008

Bulletin Type: Service

Topic: Hydraulic Actuated Clutches Equipped with Easy Pedal Clutch

Issue Description:

When utilizing a Heavy Duty Easy Pedal with a hydraulic assist clutch actuator, the cab pedal cannot be used to indicate when clutch adjustments are required. Drivers may not notice the need for clutch adjustment and continue driving in such condition. Lack of adjustment will eventually lead to yoke interference with the clutch cover causing extensive damage.



Affected Models/Population:

Hydraulic Clutch Actuator application equipped with Easy Pedal Clutches

Field Strategy:

It is recommended to spec the Solo clutch with all hydraulic linkage applications. If non-self adjusting clutches are used in this application it is important that clutch adjustments are maintained. Adjustment and lubrication intervals should be every 20,000 miles. See attached for proper bearing position inspection procedure.